



## Your President's Perspective

by  
Renda Brumeloe

### Higher Education “Preparing to serve.”

It sounds good to say that everyone should have a right to a college education. But equal opportunity and equal ability are unequal in our diverse world. Not everyone has the ability to earn a higher degree. Higher education is what it is . . . it prepares us to serve. However, higher education is also what we make it. Let me explain.

I have a boyhood chum who barely graduated from high school. He was too busy learning Construction and the Real Estate business to plan his academic future. He now owns hundreds of properties throughout the southeast and Texas. He has gained a higher education degree without entering the hallowed halls of an alma mater. However, he will be the first to tell you he did not achieve success without someone giving him the chance and encouragement to dream his dream.

I have another acquaintance and friend, who having great vocational success questioned, “God, why should I accept a teaching position in this inner-city high school?” Her decision to do so is now redeeming many future dropout students and producing higher education and great potential in students no one had given a chance to succeed. She is experiencing the most rewarding years of her career. It is simply remarkable! Her classrooms are filled with eager anticipation and it is thrilling to observe.

Students of every grade level need educators and people who care, who will encourage and tap their potential at all stages of their development. Education is the answer.

Our mission here at the Academy of Senior Professionals is to serve our youth, our University and community. As our ASP Director, Eunice Trent has reported to you that we want to be an arm and hand extended to help community programs, after school programs and students on campus.

It will not happen by mere talk or monthly luncheons but by leading and joining other service minded organizations, and developing our resources (getting to work). We already know the needs.

And so, we press our footprints and footsteps toward this goal. We have work to do. That is our mission. The saying is true: “I don’t care what you know,” as long as “I know that you care.”



**Important luncheon reservation information:** All members and guests should make their reservations by **Thursday, March 7.** **ASP members** will be contacted by their designated callers. **Guests** may make their reservations by calling Mrs. Eunice Trent, ASP Director, at 405-491-6311

## LUNCHEON SPONSOR



**SPANISH COVE  
RETIREMENT  
CENTER**





### Greg B. Garabedian, Ph.D.

Greg Garabedian, a native of Tel-Abiad, a small village northwest of Aleppo, Syria, earned the Bachelor of Arts degree in Psychology from Southern Nazarene University in 1971, and a Master's Degree in Mental



Retardation at the University of Oklahoma in 1972. He earned a Ph.D. in School and Counseling/ Psychology from Oklahoma State University.

He grew up in a family of seven from Armenian ancestry, and had always wanted the opportunity to pursue a formal education. At the age of 13 Garabedian was invited to Sunday school by a Protestant minister, his maternal cousin appointed by the Nazarene denomination to pastor a church in Aleppo. In 1963 Garabedian became a Christian, and within a short time, arrangements were made for him to attend the Nazarene Bible High School in Beirut, Lebanon, from which he graduated five years later. In 1968, the interest and care of missionaries in that area afforded him with the opportunity to attend Bethany Nazarene College.

Greg served as the Director of the Geriatric Psychiatry unit at Cushing Regional Hospital in Cushing, Oklahoma for 8 years and as a School Psychologist for the Stillwater Public Schools for 23 years. He currently has a private psychology practice in Stillwater, Oklahoma. Greg has been married to his wife, Linda for 37 years and they have 2 adult children, Adrienne, age 33 and Peter, age 28.



### MY FAVORITE CHOPIN

The Academy of Senior Professionals will host an on-campus piano recital of Renda Brumbeloe, our Academy president.

Renda will play an eclectic collection of Chopin and composers from the Romantic Period. The recital will be in Cantrell Hall, on the SNU campus in Bethany, Oklahoma on Friday evening, March 8, at 7:30 p.m.

The public is cordially invited to attend this free event.



Check out the link below for a wonderful sample of Renda playing the piano. [Chopin Minute Waltz - YouTube](http://www.youtube.com/watch?v=6g1176yEzbU) <http://www.youtube.com/watch?v=6g1176yEzbU>

Hope to see you at the recital.  
Eunice

### LUNCHEON SPONSORS

- October 8 - Legend of Council Road
- November 12 - United Pharmacy in Yukon
- December 10 - Southern Plaza
- January 14 - Concordia Life Care Community
- February 11 - Mercer-Adams Funeral Service
- March 11 - Spanish Cove Retirement Village
- April 18 - Southern Nazarene University-Peer Learning Network
- May 13 - Hospice of Oklahoma County



## From The Director's Corner

by  
Eunice Trent, Director of ASP

Dr. Stan Toler is a dynamic international speaker, having spoken in nearly 80 countries of the world. He has written over 90 books, including his best sellers, *The Secret Blend*; *Richest Person in the World*; *Five Secrets of An Exceptional Leader*; *The Inspirational Speaker's Resource*; *ReThink Your Life*, his popular *Minute Motivator for leaders series*; *Total Quality Life* and his newest book, *TERRIFIC! Five Star Customer Service*. His books have sold over 3 million copies.

For many years Toler served as Vice-President and taught seminars for John C. Maxwell's INJOY Leadership Institute, training church and corporate leaders to make a difference in the world. Some of his most popular training seminars include: *Seven Secrets of True Wealth*, *Five Secrets of Becoming A Leader*, *The Leadership Challenge*, *Terrific! Five Star Customer Service*, *The Power of Your Attitude*, *Total Quality Life*.

Thursday, April 18, 2013  
11:30 a.m.—1:00 p.m.  
Downtown Oklahoma City  
The Petroleum Club  
100 N Broadway Ave #3400  
Oklahoma City, OK



Toler has shared the platform with great speakers such as Zig Ziglar, Jerry Lucas, Rick Warren, Bill Hybels and baseball great R.A. Dickey. R.A. often says that Stan is the most prolific writer he has ever met. His best friend, John C. Maxwell, describes him as an engaging speaker who has a terrific sense of humor and the charm of a Southern storyteller.

Bringing a wealth of knowledge and candor, Dr. Toler will present concepts from his new book on customer service when he is the keynote presenter for Peer Learning Network Presents.

Dr. Stan Toler, General Superintendent, Church of the Nazarene will be the featured speaker for the upcoming **April 18, 2013 Peer Learning Network, PLN Presents.**

Every April, the Academy of Senior Professionals attends the PLN Presents for the main ASP luncheon event. Academy members are given the very special rate of **\$15.00 per member.** (The general public attends this same luncheon for the cost of \$40.00.) ASP members are given a wonderful opportunity to attend at the ASP price. Members will ride a bus downtown together for this special luncheon.

Contact **Eunice Trent, ASP Director**, at 405.961.6311 or [etrent@mail.snu.edu](mailto:etrent@mail.snu.edu). Payment of \$15.00 is due at the time of your reservation.

## ABOUT PEER LEARNING NETWORK

The Peer Learning Network (PLN), established by Southern Nazarene University in 1995 and facilitated by the Zig Ziglar Center for Ethical Leadership, brings together the CEO and leadership teams of Oklahoma-based companies who have committed to be Major Partners in the Peer Learning Network. Partners utilize PLN for the purpose of professional development. Members pool resources and thereby hear world-class presenters, share management, leadership and planning ideas and network with a wide array of successful Oklahoma company representatives.

PLN Sessions are held at The Petroleum Club 100 North Broadway Ave. Oklahoma City, OK 73102 and at Southern Nazarene University 6729 N.W. 39th Expressway, Bethany, OK 73008. Members from the leadership team of each PLN Partner comprise an interactive audience of business leaders. Presenters and topics are selected by PLN Partners. At each quarterly presentation those in attendance hear from engaging speakers who inspire, inform, challenge and question business as usual. This year's speakers are an exciting collection of innovators, adventurers and leaders that are impactful and engaging our world.





## BOOK DISCUSSION GROUP

Jack David Arnold

**Academy member, Dr. Paul Scheie, will review  
*The Worldly Philosophers***

While teaching an introductory course in philosophy last year, I discovered the book, *The Worldly Philosophers: The Lives, Times, and Ideas of the Great Economic Thinkers* in a special display at the Learning Resource Center at Redlands Community College in El Reno, Oklahoma. Because Dr. Scheie and I meet often for lunch and find ourselves talking about **philosophy: the love of wisdom**, I just intuitively knew that he might be interested in reading “this living classic.”

Concerning his book review. Dr. Scheie wrote in an e-mail message on January 27, 2013, “Much as I have enjoyed reading *The Worldly Philosophers* several times now, I continue to mull over the approach I finally will take. Reviewing this book is comparable to reviewing an encyclopedia. I do want to review the introduction written by Robert L. Heilbroner, the book’s author who was an American economist and historian of economic thought. Heilbroner explained in his introduction “why these philosophers did not show up until almost 1800.”



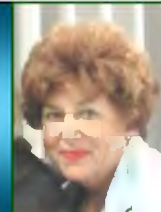
“Beyond that,” Dr. Scheie continued, “I have been struck by the issues and situations then that are still with us today and are even on the front burner in the current political agendas. Right now, my inclination is to continue with Adam Smith near the beginning, Karl Marx in the middle, and end with John Maynard Keynes. I hope to use what I feel are interesting features of their lives as well as the economic issues they talk about.”

Paul Scheie received a Ph.D. degree in Biophysics from The Pennsylvania State University. He has served on the faculties of Oklahoma City

University, The Pennsylvania State University, and Texas Lutheran University, from which he retired as Professor Emeritus of Physics. In addition to the subject of physics, he has taught biophysics and molecular biology. He spent two sabbaticals as a Visiting Professor doing research at the Medical School of the University of Bergen in Norway. He has published research on cockroaches and bacteria, as well as on the ultra-structure of human tissue culture cells, heart cells, and blood cells using a scanning electron microscope. He currently enjoys volunteering as exhibits facilitator at the Science Museum of Oklahoma.

***The Worldly Philosophers* on March 11,  
9:30-10:30 a.m. in the President’s Room  
Third floor of the Webster Commons**

ASP “Trek” Time  
By Pat Perry



Dear ASP Friends,

Our Devon trip has been so successful, that the March 14<sup>th</sup> trip is filled for the 10 am and the 1 pm time slot, and we have a waiting list of 20 more who would like to go. I am looking into scheduling another trip later in the spring so those of you who missed it will have a chance to go at another time. If you are unable to join us on the March 14<sup>th</sup> trip, let me know so that I can give someone on the waiting list an opportunity to make the trip. There is no charge for admission, lunch is on your own at Devon’s lunch area, and there will be a \$5.00 charge for the bus.

If you are interested in joining us on either the Panama Canal Cruise or the British Isles Tour, please contact me for information as soon as possible. It is important we get these trips booked as soon as possible to get the Early Bird discounts. Have a blessed Easter!

Pat Perry  
373-4157



# STEPPING FORWARD

Emmalyn German



"All being well, we hope to finally have our new ASP Portfolios ready for you at this upcoming meeting. Please remember to bring your \$5.00 for each one if you have not already paid.

Some of the things you will find in the white three ring Portfolio include a table of contents; a place for our newsletter, *The Academy Perspective*;



photographs of ASP members with contact information; a brief history of the ASP; the ASP Bylaws and Administration; a listing of SNU Leisure Services at SNU that members

may use; volunteer opportunities for ASP members; and advertisements of our sponsors as Community Resources. We hope this will be a convenient place to file all the ASP information you will receive throughout the year.

March is also our membership reception month. If you are a new member since November 2012 who has turned in your application and dues, we want to receive you into membership in a small formal ceremony at our luncheon. You will receive a certificate, and a nice eagle pin to wear. If there is anyone out there who has been inadvertently overlooked and you do not have a certificate or pin, please contact me at [emmalyncg@hotmail.com](mailto:emmalyncg@hotmail.com) or [405.470.6737](tel:405.470.6737) and we will make sure you are included this time."



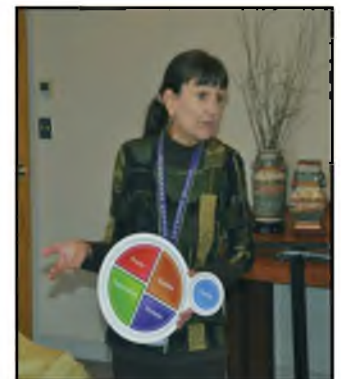
Luncheon Music with Emmalyn



Morning Seminar with Karen



Cheri Welch



Karen Massey, Dietitian



**REMINDER**  
**PLEASE BRING YOUR 2013**  
**DUES TO THE MARCH MEETING**

**\$ 20.00**



February Luncheon meeting



**“Sharing a Continuous Flight”**

**2012-2013 Officers and Committees**

**Officers**

- Eunice Trent, Director
- Renda Brumeloe, President
- James Long, Vice President
- Emmalyn German, Immediate Past President and President Elect
- Joan Dozier, Secretary
- Gary Lance, Treasurer
- Miltonette Brasher, Member Representative
- Darlene Overholt, Member Representative

**Standing Members**

- Eunice Trent, Strategic Planning
- Harold Dozier, By Laws and Organization
- Jack David Arnold, Programs
- Emmalyn German, Publications
- Bobbie Loper, Membership

**Special Committee and Activity Leaders**

- Linda Carley, Calling Chairperson
- Madalyn Shannon Long, Historian
- Jack David Arnold, Book Discussion Group
- Helen Southerland, Morning Seminar Interest Group
- Pat Perry, Travel Club
- Shirley Mears, Get Acquainted Moments

**MARCH HOLIDAYS**

- 10 DAYLIGHT SAVINGS BEGINS
- 17 ST PATRICK’S DAY
- 20 SPRING ARRIVES
- 24 PALM SUNDAY
- 28 HOLY THURSDAY
- 29 GOOD FRIDAY
- 31 EASTER



**ASP Calendar**

- Monday March 11, 2013
- 9:00-11:00 a.m. Shuttle Service from the Sawyer Center lot (41st and Donald) to the Webster Commons
- 9:30 a.m. Morning Seminar
- 11:00-a.m. to 1:00 p.m. Luncheon Meeting in the Heritage Room
- 1:00—1:30 p.m. Shuttle will return to parking lot
- 1:15-2:15 p.m. Administrative Council Meeting

***The Academy Perspective***

**- - -Publication Board- - -**

Production Editor Joan Dozier

**- - -Columnists- - -**

President’s Column	Renda Brumeloe
ASP Director	Eunice Trent
Book Discussion	Jack David Arnold
Morning Seminar	Helen Southerland
Obituaries	Madalyn Long
Photography	Dale German
Travel Club	Pat Perry

**- - -Communications Policy- - -**

We value messages from our readers.  
 By mail: ***The Academy Perspective (TAP)***,  
 Southern Nazarene University, 6729 N.W. 39th  
 Expressway, Bethany, OK 73008  
 By fax: (405) 491-6381  
 By computer: [www.snu.edu](http://www.snu.edu) —Alumni &  
 Friends—ASP

**- - -Newsletter Subscription Information- - -**

Annual subscription - ***The Academy Perspective***:  
 Non-members—\$10.00 per year  
 Members—Included in membership

**- - -Contributions- - -**

To make tax deductible contributions to the Academy of Senior Professionals:  
 Mail to: Gary Lance, Treasurer  
 Southern Nazarene University  
 6729 NW 39th Expressway  
 Bethany, OK 73008