

THE CRUSADER

November 16, 1973



Deeper
Go deeper,
Discover,
Uncover
Reveal
Expose
Don't be afraid
of you,
And please don't turn away
From me
talk real,
Feel til you hurt,
And hurt til you cry.
Admit when you're wrong,
Be strong when you're right
And don't be afraid to say
You're not sure.
Be basic
But go deeper,
Be simple
But think complexly.
Be easy
But always firm.
You, my friend,
Need never compromise
The uncertain
Or settle for less
Than God's best
But you must be real
And feel
And hurt--
Be you
And reach out.

cku

the CRADLE song

by LYNNE JOHNSON

A bit of simplicity, a handful of nuns, and a rounded teaspoonful of humor. Stir and carefully blend in good directing and hard working crews. What you have now is a taste of the flavor that makes Cradle Song a fine evening.

The play is not too heavy; simple plot, simple setting, simple emotions, a flowing and easy pace. That way you are not overstuffed.

Molding the play together are 13 character parts: Nine nuns, two men (the doctor and Antonio) and the poet between acts.

Directing the production is speech professor, Dr. Earl Owens. Asked what he feels in gluing and pasting every aspect of such a performance together he said, "I think basically there's a strong satisfaction in pulling together elements that make a good play, to see it pulled together in a complete unit... and ... the audience responding to the play is satisfying."

Something should be said about the play. It is slightly unusual in its own way. It does not try to sell Catholicism, but conveys love, gentleness and understanding. It warms the viewer to see the closed-in convent life harboring people reacting to each other and how they deal with an unusual situation that changes the convent life. Not much space is left for plas-

tered saints.

It remains simple, but yet has been successfully performed around the world since its production in Spain approximately 60 years ago. It has since been translated into most major languages. Maybe it's the laughs or maybe it's the sentimentality--whatever, one lets it come together, letting it rise slowly and bake to perfection.

Opening night for the play is November 16, tonight at 9 p.m. Its final two curtains will rise at 1 and 8 p.m. Thanksgiving day. Students may obtain tickets for \$1, general admission is \$1.50.





by NEIL READ

"Europe has a set of primary interests, which to us have none, or a very remote relation. Hence, she must be engaged in frequent controversies, the causes of which are essentially foreign to our concerns. Hence, it must be unwise in us to implicate ourselves, by artificial ties, in the ordinary vicissitudes of their politics, or the ordinary combinations and collisions of her friendships, or enmities." --George Washington: Farewell Address to the People of the United States, September, 1796.

Our first president well recognized the perils of entangling alliances. He knew that national friendships entail military responsibilities--often burdensome, even loathsome, responsibilities. In order for a nation to serve the best interests of her own people, she should form advantageous alliances but, as much as possible, avoid self-damaging commitments.

Today, however, it is Europe, rather than the US which has adopted an isolationist stance. Most European nations have become aware that their interests in the Middle East do not coincide with those of the US. They import eighty per cent of their fuel oil from the Middle East and North Africa. Needless to say, the vaunted Arab oil weapon is a very real threat in European eyes.

An Arab oil cutoff will make things difficult in the US, but it would devastate Europe. It may force Americans to drive a little less, but for Europeans it would probably spell the end of private petroleum-powered automobiles. And the Arabs would not be hesitant to use their weapon if sufficiently provoked. They proved that recently by imposing an embargo on the Netherlands, one European nation bold enough to vocally support the Israeli cause.

With this in mind, it should not be too surprising that most of the European nations refused to antagonize the Arabs by aiding the US in resupplying the Israelis with war material. All but Portugal refused to allow American resupply aircraft to fly over or land on their soil. West German Chancellor Willy Brandt even forbade the issuance of US supplies to Israeli ships from US bases in Germany.

From the official US point of view, these actions are cowardly, shocking, and, in some eyes, traitorous. State Department spokesman Robert J. McCloskey was appalled by the Europeans "going to some lengths to, in effect, separate themselves publicly from us." One US diplomat was a bit more blunt. "Let's face it. At crunch

time, we were screwed by our friends."

The real key to understanding the European unhelpfulness in the Mideast is an awareness of their perspective on NATO. Most European nations believe that NATO was formed purely and simply to halt Soviet aggression in Europe. They do not believe the alliance demands automatic blanket support of all US policies wherever and whenever they happen to conflict with those of the Soviet Union.

They bitterly resent the fact that they have not been consulted about US diplomatic thinking and policies relating to the Mideast war. Some West German officials averred that they were not even aware of the US military alert until it had been in progress for several hours. "If your President has a hot line to the Kremlin, 'com-

plained one West German military policeman, "I don't see why he should not have at least a cold one to Bonn." The US needs to avoid making decisions behind the backs of its "friends" if she expects to retain their support.

The reality of the present situation is that many Europeans are almost as much afraid of US domination as they are of Soviet aggression. An editorial in the *France Soir* explained this view: "The major anxiety of the French is that, although the limits and fragility of the detente between the superpowers have been made conspicuous, Washington and Moscow still intend to remain the only ones to determine the fate of the world." Quite a disturbing thought to a Frenchman who is worried about keeping his family warm!

FREAKS SPEAK

by JIM WILCOX

It is quite evident that this is the year of conformity. Anyone who refuses, due to personality differences, a frighteningly quick wit, or just a set of vocal cords, is being subjected to faculty pressure. There have been two or three "warnings" in public speeches or letters to those who have been known to show a higher-than-average amount of spirit in the past. Because I am a proud member of this recently persecuted group, I will try to represent us with the journalistic "we" in the balance of this letter. Let us now attempt to discover why the Spirit Freaks started two years ago and conversely, why we are now being asked to cool it.

The first NNC game I attended took place in the Central Junior High Gym during the 1971-72 season. Having once played for a big-city high school team, I had become conditioned to loud crowds that caused the adrenalin to flow. This crowd at this game barely caused the blood to flow--they were dead. It more closely resembled a golf crowd than a basketball crowd. It nearly drove me to nausea--no spirit, no enthusiasm, no fun. It was then that I decided that if I were to attend anymore NNC basketball games, the spirit of the school was going to have to change. If I didn't contribute to the change, how could I expect anyone else to?

It was at that first game that the Spirit Freaks began. By the end of the season, the spirit of

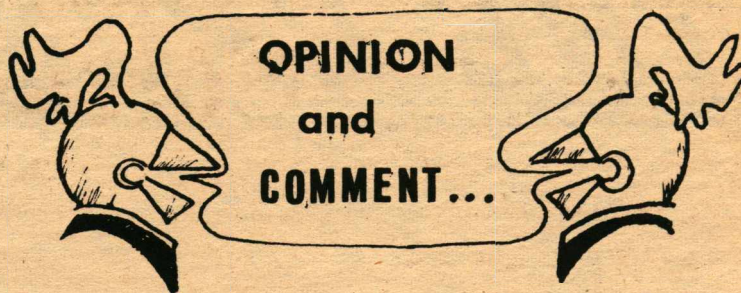
the school had changed noticeably for the better. The Spirit Freaks did not necessarily change the spirit of the school single-handedly, but I do think we did contribute.

The spirit on campus this year is higher than ever. The freshman class is enthused and we, the upper class veterans, are continuing where we left off last year. It's ironic that when we started, we were well liked by coaches and even the college President and his wife. Now, school spirit is high and it seems we are no longer thought needed or even wanted. The coaches seem to be saying, "Thanks for all you've done, but we don't need you anymore."

Homecoming season is a time that every basketball fan looks forward to. Win or lose, the game provides a blessed break in the midst of term papers and final exams. The crowd is big and, for the most part, much older than usual. It's just a great time to be rowdy!

I can only speak for myself when I say that I will yell anything my conscience and good sense allows. I cannot be phoney, and perhaps more importantly, will not be. If an opponent can't take the pressure of the crowd, then he should not be on the court at all. Maybe the P.E. department can tolerate continual sub-.500 seasons, but I abhor them and will do all I can to win--even if it means demoralizing the opposition from the stands.

But then, I guess I've always been a non-conformist.



A Hierarchy of Student Needs

According to Art Berry, former state director of Idaho Student Lobby, a college student's four basic needs are money, sex, dope, and booze. Berry, now a law student at University of Idaho, made the remark at Boise State College October 26 during ISL's second annual state convention.

Berry's quartet of needs is not a little removed from those traditionally ascribed monasticism: poverty, chastity, obedience, and love.

We all could use some extra cash, but that hardly jives with poverty. Obedience to professors facilitates graduation. Love is worthy provided it is fused with respect. Love without a modicum of chastity is perversion. Sex is no good for dorm residents: dope and booze are questionable value to all.

So an NNC student might opt for the following list of student needs: money, obedience, love and chastity. Three come from monasticism's list, only one from Berry's, and that from the crush of economic necessity. That should tell you something about monasticism.

Berry's conception of the ideal student seems to be a virile lad in bed with an enticing lady, reading the Wall Street Journal while alternately sipping wine and puffing on a joint. Whatever happened to that commodity for which there is no substitute: study?

rl

Fee Increase Contingent on Improved Use

Whether we should approve today the increase in student body fees from \$36 to \$39 per year per student depends of course upon what the Senate intends to do with the extra money.

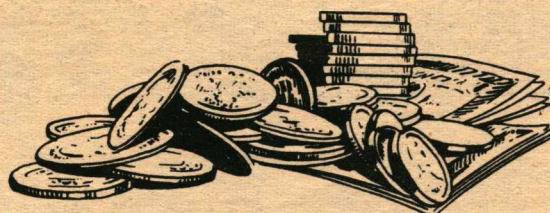
That students collectively can use their money in certain ways more beneficially than can students individually is true. The Senate seems to be contemplating even more ways to spend the students' money to serve students. An expanded Issues and Answers program, a heavier concert schedule, a plan whereby small sports and outdoor equipment such as bicycles would be rented cheaply to students, and the funding of radio station KCRH are notable examples of areas into which additional funds might go. If the ASNNC is to move ahead with these and other plans, more money will be needed.

The fee increase should be approved in order to provide the student leaders with the ability to implement their ideas.

At the same time the student body as a whole should not forget that the amount of money which the government extracts and the purpose which the money is used are both ultimately up to them. If approved, the increase should not be forgotten and next year should not be collected unless the plans for its use are in accord with the desires of the student body.

Money easily collected is easily wasted. Presently the ASNNC not only annually collects \$36 from each student but spends it as well. For example, if you are a full-time student, the newspaper in your hands has cost you more than 15¢. The entire ASNNC budget should be a matter of careful scrutiny.

mb



Correspondence

Quell Matzen's Voice

To the Editor:

John Matzen is wrong. Everybody is not alarmed about Federal financing of education. I am not.

What I am alarmed about is the persistent presence of letters to the editor by John Matzen--not a member of the college community--who is using this page of The Crusader to proclaim political opinions of questionable veracity.

A Faculty Alarmist
P.S. Vivacious sakes alive!

Fee Increase Advocated

To the editor:

The proposed fee increase should be passed because of the nature of the funding program at NNC whereby fees can be increased only every other year. Although the ASNNC will probably not need the extra income next year, this request asks us to look ahead two years--through the '75-'76 academic year--when the present sophomores will be seniors.

It is probably true that for next year alone we would have enough money to continue at present funding levels, providing (1) there is no decrease in the number of students, (2) the ASNNC gets away from funding organizations like MUN and For-

ensics, (3) no new student services are offered by the ASNNC, and (4) the ASNNC does not expand its concert program.

Passage of the fee increase will mean the potential for improvement such that (1) students will be offered more, bigger, and better concerts because we will be able to afford higher risks, and (2) services to students could be expanded for example, an outdoor program in which the ASNNC could purchase bikes, ski equipment, hiking equipment, etc., to rent to students at a low charge could be established. It should also be noted that the 5.5% increase asked for by the Senate will barely meet inflationary pressures.

A vote against the increase means that the ASNNC will be forced to continue at the level with the potential of being forced to cut back due to inflation. Voting for the measure will assure the present levels of funding and will give the ASNNC the ability to expand programs in needed areas.

It is worth noting that those voting against the proposal in the Senate were all Juniors and Seniors. Let's think--ahead.

Terry Mattson

Foosball Morality

To the Editor:

For all those who enjoy playing foosball but simply can't bring themselves to part with their quarters. I have good

news. Thanks to some of our enterprising NNC students, ways have been found to avoid spending those precious quarters. Perhaps you have wondered why the ping pong paddle was being crammed into the foosball machine while the other players shielded the operation from the eagle eye of Claude Drake. Using the ping pong paddle to release the balls is only one ingenious way of getting free games. Using a penny instead of a quarter is also quite effective.

No doubt there are those of you think this might be wrong. But come on, who are we hurting? It's not like we were taking money out of the machine. After playing a couple of free games no one is worse off than before. I know there are those who say that if everyone did it there wouldn't even be enough money to pay for the machines. However, there is no need to worry about that because there are always a few odd people suffering from an over-sensitive conscience. Some of them even go so far as to say its un-Christian. It's best to avoid these people--they can be a real drag.

Some people complain because of the high school students who use NNC foosball machines. However, if we can keep them from becoming sophisticated like us, we can play the free games while they plunk in the quarters.

Mark Wilson

Shakeup Called For

To the Editor:

I think that the classes should choose the girls to represent them on the Homecoming court instead of N Club and the Senate. It seems that since the girls do represent the classes, we should have more say as to those from whom we choose. As it is we seem to have pretty much the same choices every year. If the classes chose the girls I feel that this would change. I have nothing against these particular girls, but there

are plenty of girls that are just as deserving as these who seem never to get nominated. Therefore girls should not be nominated two consecutive years. If a girl gets on the Court she should not be allowed to be nominated the next year. Since the queen is chosen from the Junior and Senior classes it would only be fair to allow a Freshmen or Sophomore princess to be on court again her senior year and have a chance at this honor. Also, it would seem that if a girl is going to be in a certain class 2/3 of the school year and her class nominates her she should be allowed to represent them.

Lady

Blood Drive Repercussions

by GARY BENNETT

Administrators of colleges and universities around the nation are groping in the dark in pursuit of finding a way to make higher education more relevant to life in today's society. They are attempting to make life on campus an experience the student will never forget. In order to do this, they have gone to such extremes as instituting co-ed dorms, letting the women students run around the town during all hours of the night and early morning, and allowing students to play barefooted on the tennis courts.

They claim that these disgusting acts of permissiveness hold educational value in that they are sociological experiments.

If NNC were to indulge herself in such experiments in nefarious living, she would lose the support of the educational zone, and then there would be no place in the future for Nazrene young people to go to find their future husbands and wives.

But shunning such experiments is not to shun the grinding wheel of progress. For NNC did hold an experiment of a little different nature last week when the red cross bloodmobile came to campus.

Wooed by the pied piper of universal humanitarianism, 205 virtuous volunteers swarmed into the student center like white mice ready to participate in a scientific breakthrough. First they underwent a rigid screening process, scampering and stumbling through the seemingly endless maze of registration desks. Sad to say, ten volunteers were rejected, but the remaining 195, with heads held high, and tears trickling down their cheeks, bade farewell to their relatives and friends, and turned their backs to the outside world for perhaps the last time.

But the teeming masses of spectators showed no sympathy, standing impatiently outside with their noses pressed against the window panes, seeking to quench the raging flames of sanguinary lusts instilled in their hearts by an over-exposure to the acts of violence and gore vividly displayed on melodramatic television hospital shows.

After the experiment, the ragged, motley crew settled down for a snack of water, milk, and cookies, fighting desperately to regain their strength and composure after such an emotional and physical drain. The objects of the experiment were then each tagged with a "very special person" sticker for further observation, and the rumor is out that all 195 participants are still alive and doing well.

BULLDOG LANES BOWLING-FOOSBALL-POOL

special rates-free instruction

466-6414

105 E. Hawaii Ave.

Nampa



Mott's FLOWER SHOP

319 12TH AVE. SOUTH
NAMPA, IDAHO



FREE DELIVERY

Ph. 466-1111

319 12th Ave. South

BOOTH *Rly* CleanCenter

WITHIN WALKING DISTANCE.
AT HOLLY SHOPPING CENTER
ONE DAY SERVICE:
IF IN EARLY A.M., OUT THE SAME EVENING
WILL CLEAN ONLY, PRESS ONLY,
OR CLEAN AND PRESS

Phone 466-9944

218 Holly NAMPA

OWYHEE BARBER

Owyhee
Shopping
Center



501 12th AVE. RD.

466-5231

EUTERPE & CO.

An outstanding vocal concert opened the Nampa Concert Series last Thursday night. The Cosmopolitans, a vocal trio, presented an interesting and varied program.

The music ran the gamut of vocal repertoire from German art song to musical comedy. One unique feature of the program was the inclusion of one section of excerpts from *The Man of La Mancha* and a section of North American folk songs. The latter were solos sung by Jennifer Juras, and provided a pleasant change from the ensemble sound.

The Man of La Mancha medley was superb. The quality of this music is higher than in most musical drama, but is still appealing to the general public.

A second medley was composed of pieces from operettas. Some of the pieces included were so severely abridged as to prove unsettling. The arrangement would have benefitted by the exclusion of one or two songs, with more of each one included. The medley was well sung in the light-hearted style that makes operettas so appealing.

The balance of the program

was more what one would expect at this type of concert--songs from operas, a German art song and some sacred pieces. All were presented very well.

In addition to Ms. Juras, the group includes James Asbury, tenor, and Stephen Burman, baritone. They were

accompanied by Roger Rundle, former musical director of the Bel Canto Opera Company. While their stage manner was formal and at times even stiff, the Cosmopolitans showed a love of music and performed spontaneously, not perfunctorily.

behind bars

by CRAIG ZICKEFOOSE

This week's article concerns a person, but involves many who are behind literal bars. The man directly involved is Ralph Wayne Taylor of Oklahoma City. His comments were unprintable after hearing of Spiro Agnew's three years' probation and \$10,000 fine.

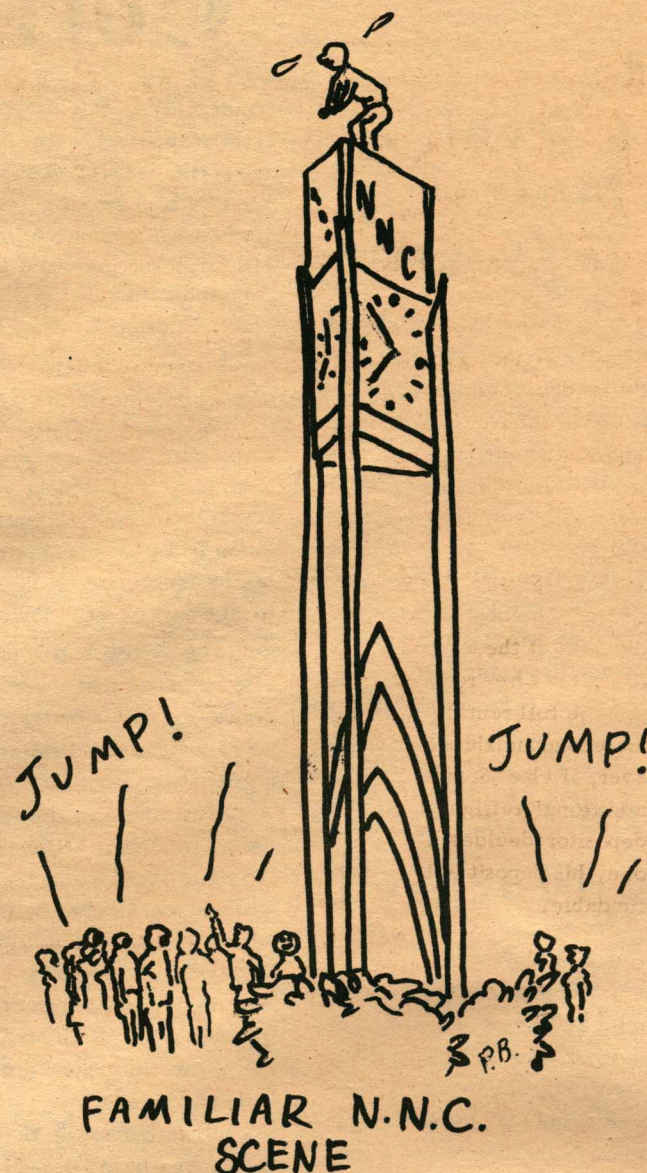
Taylor just recently began serving a 15-year prison sentence. His offense was stealing \$3.73 from city parking meters.

The justification for the situation in which someone is caught for cheating on thousands of dollars on income tax and receives a 3-year probation while someone else steals \$3.73 and is sentenced to fifteen years is hard to grasp. It is

quite apparent that during our time, as generations gone by, it is the laws of the upper echelon being enforced on the "lower" class society.

Very few times in history has a wealthy person been actually put to death, although they have been sentenced. One reason for this is that the wealthy can afford the best lawyers, while less fortunate individuals are stuck with court appointed counsel.

A drastic review needs to be made of our legal and judicial system before we can say that we have equal rights for every man.



Oldsmobile-G.M.C.

SALES & SERVICE

Your value holds
when you buy an Olds

DOBBS BROS. MOTOR CO.

Your Oldsmobile & G.M.C.
Dealer in Nampa.
466-3563

ARCTIC CIRCLE DRIVE IN

1008 3rd St. South
INSIDE SEATING
Drive-up Window
Ranchburgers Fish & Chips
OPEN 10:AM DAILY



60th ANNIVERSARY REVIVAL

First Church of the Nazarene
600 Fifteenth Avenue South

Speaker:
REUBEN WELCH

November 14 - 18
Weekdays - 7:30 P.M.

Sunday Services:
9:45 - The Forum (College Class)
10:50 - Morning Worship
4:00 - Evening Service

BULOVA ACCUQUARTZ

the
most
remarkable
watch
we ever
sold



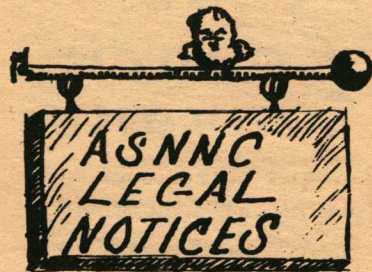
Hamilton
Jewelers

The technology in the
Bulova Accuquartz watch
is mind-boggling.

It means owning a watch
of exquisite accuracy,
that's light and com-
fortable and something
people think is just
wonderful.

If anyone asks, just say
its accuracy is controlled
by a high precision
quartz crystal vibrating
at 32,768 cycles
per second. Incredible!
Come in, we'll show you
all the styles. From \$200.
We'll even explain how
it works.

(Watch shown actual size.)



The Senate is considering the purchase of some additional portable refrigerators for rental. Those students who wish to reserve a refrigerator for second term (provided the purchase is made) may do so by submitting a \$5.00 deposit to the ASNNC Office. The deposit will be refundable if the depositor elects to accept the refrigerator and pay the full rental fee (\$27.00) for second and third terms. However, if the Senate purchases additional refrigerators and a depositor decides not to rent one, his deposit will be nonrefundable.

Neil Read
ASNNC Business Manager

SMC

Applications for 1974 Student Mission Corps are available in Mr. Laird's office in the Administration Building.

Because the selections are to be made by the end of the first term, those wishing to apply are advised to do so soon.



Ron's Clip

Shop

111 12 ave so.

NAMPA



Nampa Floral
ORDER EARLY



ORCHIDS
GARDENIAS
CARNATIONS

1211, 2nd St. South

WE GROW OUR OWN FLOWERS

FREE DELIVERY

NEW ACCOUNTS WELCOME

Helt Hit By Auto

NNC sophomore Connie Helt was struck by an automobile last Friday night, November 9, as she and her roommate Sharon Gain, were enroute to the evening meal.

Connie sustained a fracture in the collarbone as well as several bruises. Sharon was not injured. The girls did not cross at the crosswalk and were wearing dark clothes on a wet night. These factors contributed to the accident, which occurred between 5:30 and 6:00 pm.

Connie, a Crusader staff writer, is staying at Mercy Hospital and expects to return to her Caldwell home soon. Her physician, Dr. Bob Mangum, is unsure as to when she will be back in school.

Connie's mother declared herself to be the "luckiest lady in the whole world" in that Connie's injuries were relatively slight. Both Connie and Mrs. Helt wish to express a deep thanks for the concern exhibited by members of the NNC community and friends from Connie's home church, Caldwell First Nazarene.

It seems that volunteer organizations tend to give more than do those with paid positions. Results of the Blood Drive Challenge were: KCRH 11 pints, The Crusader 10, and ASNNC officers 6.

Traffic Revisions Desired

Speed limits on Amity Avenue and Holly Street are posted at 30 mph, although 20 mph is the basic speed limit in Nampa unless posted otherwise, Barry Grant, ASNNC Vice-President for Community Relations, said Tuesday.

Amity and Holly criss-cross the NNC campus, meeting at the corner on which Morrison Hall is located.

The speed limits on all streets adjacent to the NNC campus should be reduced to 20 mph and should be rigorously enforced, Grant said.

Other recommendations were put forth following the auto-pedestrian accident Friday night. In a sheet prepared for NNC President Kenneth Pearsall Grant suggested that:

--All campus crosswalks be repainted.

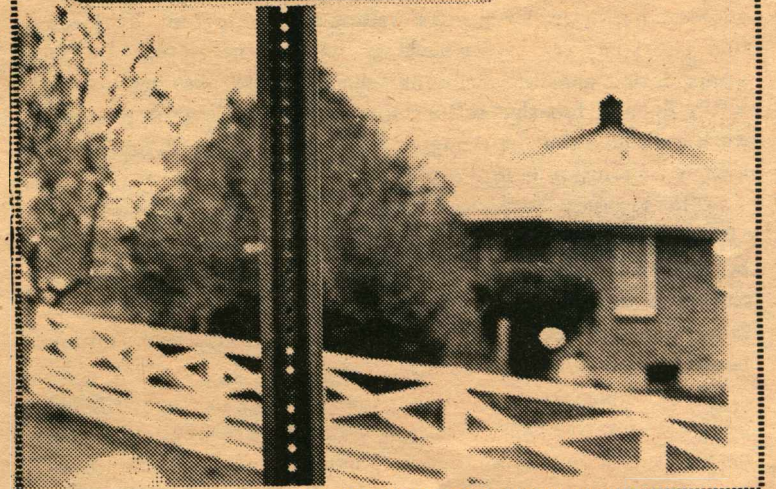
--Additional crosswalks be painted across Holly St. from the library to Kurtz Park and across Amity Ave. from the park to the women's dorms.

--The crosswalks in the middle of the two streets should be clearly marked, perhaps by a flashing yellow light.

--A stoplight should be installed at the Amity/Holly intersection.

--The night light at the corner of Amity and Holly should be capped with a yellow fixture to provide more visibility at the corner.

Grant also stressed the responsibilities of student pedestrians. "Don't expect an Idaho drive to stop for you," he added.



Frigid Winter A Stark Reality

It may be a long, cold winter for many colleges and universities because of fuel shortages and rising food costs.

Schools in the Northwest are plagued by power shortages because of a drought in the area this past year which resulted in enough water to produce only 75% of the hydroelectric demand. In early October Oregon Governor Tom McCall signed a proclamation asking all schools

in the state to close down for a whole month around Christmas to save fuel. In Washington schools are trying to comply with Governor Dan Evans' mandate that energy consumption by state schools be cut by 10%.

Some of the steps being taken are reducing classroom and office lighting levels by 33%, reducing energy used in dorms, turning off security lights, reducing campus heating levels from 72 to 68 degrees, shutting off fountains and eliminating Christmas decorations as well as urging students to avoid using elevators, electric coffee pots, space heaters and hotplates.

The governor of Indiana recently announced a series of energy conservation steps, including possible shutdown of state universities for two weeks this winter. However, exactly when and if the university will shut down is still speculation. Some of the energy saving measures taken in Indiana include large state cars being replaced by compacts, reduction of speeds at which state cars are driven and closure of partially-used buildings in state institutions.

The University of Texas is trying to reduce its energy consumption by 30% using similar methods. At many school heating and ventilating units have been put on time clocks that will automatically lower the temperature by several degrees during the night, a savings of thousands of dollars annually, and students are urged to bring extra blankets.

COX'S DONUTS



Country fresh and tempting
Be sure to order ahead.
Mon-Sat

1418 W. Flamingo

466-3227

SCHMITT'S SHOE REPAIR



COME IN FOR EXPERT SHOE SERVICE

116 12th Ave. So.

beyond the walls

by WAYNE MACKESON

Now that the United States is finally awakening to the hard fact that there will be fuel shortages, how to deal with the problem becomes the issue. Currently, a division has developed between President Nixon's economic advisors and his energy counselors over what the plan of action should be.

The economic aides, led by Treasury Secretary George Schultz, favor a sizable tax increase on gasoline and perhaps other fuels if the impending fuel shortages become critical enough. While trying to promote a tax measure, they are simultaneously attacking a gasoline-rationing system backed by Interior Secretary Rogers Morton and other White House energy officials. The disagreement has already begun to cause Nixon administration officials to choose sides.

The dispute came to light last Tuesday when Mr. Schultz, addressing a group of business writers in Washington, declared that people are "overreacting" to the energy problem and asserted that gasoline rationing "should be the absolute last resort". Schultz felt that rationing is extremely difficult to make work and added that he thought "we should explore every other avenue of solution before diving into that tank."

The Treasury Secretary's comments came only two days after Interior Secretary Morton predicted that rationing would be needed within the next two or three months and would continue for perhaps as long as two years. Mr. Morton felt that a larger gasoline tax is not the way to cope with the full shortage because it would cause too many inequities.

It is important to remember that the fuel shortage will not be just for this winter, either. When Arab oil begins flowing back into this country again, fuel shortages will still be prevalent, the main cause being that the upheavals of world oil supplies have curtailed refinery construction in the U.S. The total effect will not be felt for two or three years when proposed refineries which were to have been completed, will not be operating.

In my opinion, rationing is probably one of the worst methods to deal with full shortages. Any system devised by Washington bureaucrats must be based on equal treatment for all Americans, and it is doubtful whether any two have the same legitimate energy requirements. Rationing would impose many kinds of inequities, undue hardships, and inefficiencies upon the people and the economy. The most feasible and rational approach to the fuel shortages is for the government to allow energy suppliers to raise prices until demand meets supply.

Ideal Women Are Angelic and Human

by CONNIE WILKES

Would you like to be a fascinating woman, or be married to such an astounding creature? Helen B. Andelin seems to have all the keys to a "happy marriage" in her book Fascinating Womanhood.

One basic precept is that a woman should learn what an ideal woman is (from a man's point of view), and strive to achieve this perfection. This vision is a combination of two separate qualities Mrs. Andelin labels "Angelic" and "Human". "The Angelic arouses a feeling so holy that it approaches worship. The human side, which is just as essential, fascinates and amuses man." The way this epitome of femininity is described one might get the impression this woman is a cute little wind-up doll--The average child can learn all he or she wants to know about a toy in the short span of ninety seconds.

Mrs. Andelin in later chapters gives a long list of Do's and Don'ts for the fascinating woman:

"Develop feminine dependency, and need his manly care, or at least appear to need it.

Learn to express yourself when your husband mistreats you with childlike sauciness.

Be changeful in emotion.

Be a Domestic Goddess.

Don't be efficient in men's affairs, such as leadership, making decisions, providing a living, etc.

Don't increase the family income by working.

Don't stand in the way of his decisions or his law."

Admittedly, I have zeroed in on the most absurd suggestions the author made. She is, in essence, advocating ignorance, regression to an earlier emotional stage of life, and enslavement to one man's wants and desires. These aspects, if found in a male personality, would be considered highly detrimental. This is an example of divergent views of the male-female roles in our society. All people are categorized and expected to conform.

In speaking to the issue of slavery, Jean Jacques Rousseau made a statement which seems apropos.

"It will always be equally foolish for a man to say to a man, or to a people: 'I make with your convention wholly at your expense and wholly to my advantage; I shall keep it as long as I like, and you shall keep it as long as I like.'"

The author does make one point with which I can agree: A woman should never try to change a man. She fails to see, unfortunately, that it applies to both sexes. Carl Sandburg, a poet of extreme insight, wrote, "There is a place where love begins and a place where love ends--and love asks nothing."

Love does not ask either partner in a marriage to change, reform or serve. Love only accepts people for what they are.

Academic Council Convenes

A recent Academic Council meeting failed to arrive at a new daily class schedule for 1974-1975. The council's subcommittee of Dr. Ford, Mr. Seaman and Andy Bennett suggested one schedule revision, as did Dr. Lilburn Wesche. The council also mulled a schedule submitted by Dr. Weigelt. After ninety minutes of discussion the council had not reached a decision. The matter will be continued at subsequent council gatherings.

Problems to be overcome by a new schedule center around 1) better use of regular periods one and seven and 2) more extensive use of Tuesday and Thursday.

The council did take decisive action at their November 8 meeting in regard to the number of times a student may change between the regular and the "all-C" graduation routes. It was decided that individual student petitions for change will be heard by the council. For the uninitiated, the "47 courses of C" plan is explained below.

All C Grade Route

The "47 courses of C" plan is provided as an option to meet graduation requirements for the student who is not successfully achieving his goal via the regular 2.00 cumulative grade point average route.

Two groups of students will benefit most by choosing the option: 1) The sophomore who has below the 2.00 cumulative gpa required for junior classification so cannot complete major courses. 2) The teacher education student who does not have the 2.20 cumulative gpa required for admission to Teacher Education (methods and student teaching).

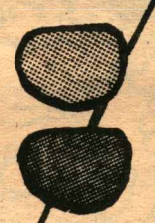


The option gives the student the right to discard his D and F and thus benefit from the improved gpa. In most cases it allow him to complete his work in less time. In the case of retained sophomore it may allow additional time to complete without facing review and possible suspension by the Committee on Academic Retention.




BRAUN STUDIO

317 12th Ave. So.
Next to Bus Depot.


WE CALL THEM "PHOTO-SUN"
DAYLIGHT TINT

We can duplicate your present lenses.



**REPAIRS TO
ALL TYPES EYEWEAR**



HALLMARK
DISPENSING OPTICIANS OF IDAHO
PHONE 459-6217
• Across from Kings • 718 1/2 Arthur • Caldwell, Idaho

Helen's Hobbie Hut

A FULL
LINE SHOP

make your own Christmas gift

WOULDN'T YOU RATHER HAVE AN ORIGINAL?

SOMETHING MADE FOR YOU ALONE.....WE HAVE CANDLE SUPPLIES-

214 12 ave. so.

DECA-POUSH - DIP AND DRAPE -
BEADS...





Bill's Briefs

by BILL HUNTINGTON

There is a trend these days toward the adoption of the metric system of measurement as every country but the US is using it. Sooner or later we will just have to get used to the fact that our dream girl measures 91-60-91 (centimeters). In the sports world, a conversion to meters could offer some interesting possibilities. Imagine the local slugger at a baseball game blasting a 150-meter homer. Or in the Super Bowl, where the Pittsburgh Steelers have the ball on the 36.6 meter line with first down, 9.15 meters to go. Paul Ellerbrook of our own Crusaders measures a towering 2.09 meters, while his teammate Ray Rumpel stands a mere 1.95. And worst of all, we will someday have to walk 1,610 meters for a Camel.

NNC's soccer club has completed their fall season with their only losses coming at the hands of the Boise Soccer Club, a team composed of many experienced foreign players. Watching the guys perform, I was really impressed with their organization in team play and also their good attitude on the playing field. Let's hope intercollegiate soccer will soon become a reality.

If you want to catch an early glimpse of this year's Crusader basketball team, they will be meeting a group of alumni tomorrow in Montgomery Gym. This could be their year, so give Orrin Hills and his boys a big boost with your support.

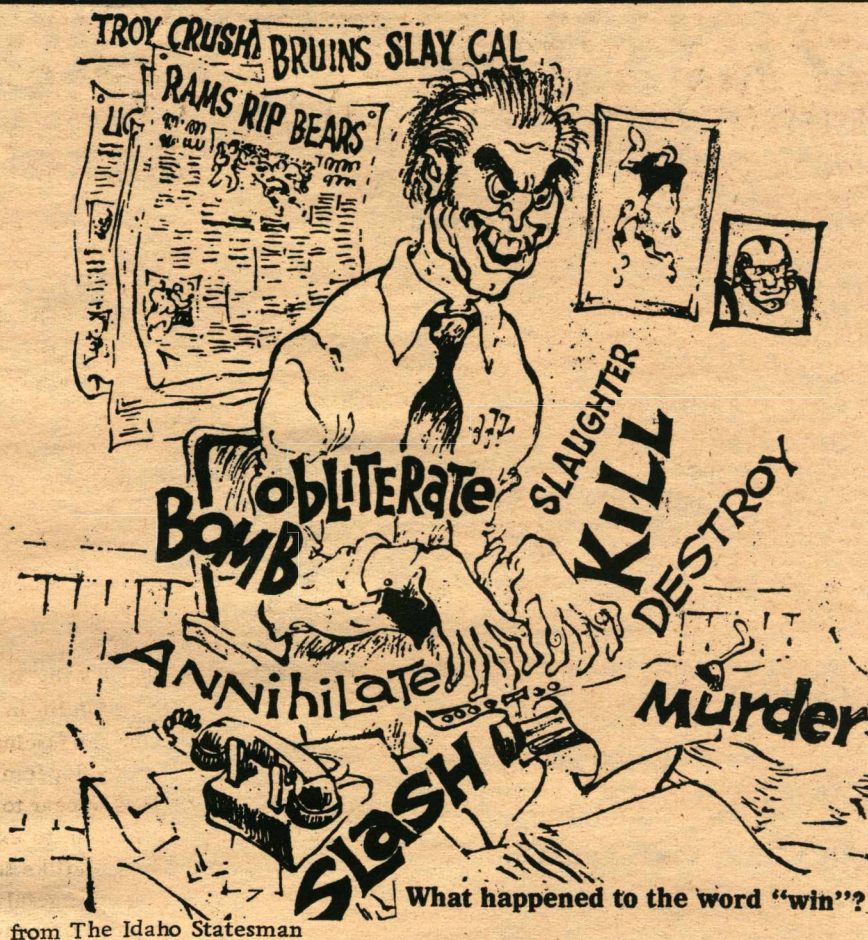
UPCOMING EVENTS

- Nov. 16 FOOTBALL Nampa High Alumni vs. Collegiate All-Stars @Bulldog Bowl 8:00.
 Nov. 17 BASKETBALL NNC vs. Alumni @Montgomery Gym
 Nov. 17 CROSS COUNTRY NAIA championships @Salina, Kansas.
 Nov. 19 CROSS COUNTRY NCAA championships @Spokane, Washington.

INTRAMURAL FOOTBALL STANDINGS

ADP 4-0
 LSP 3-1
 SLA 2-2
 SPA 2-2
 ATH 1-3
 OLY 0-4

REMAINING GAMES
 Nov. 15 ATH-ADP 3:45
 Nov. 16 LSP-SPA 3:45
 Nov. 17 SLA-OLY 1:30



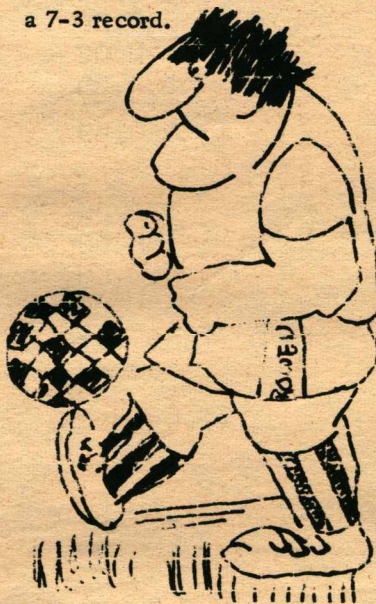
Soccer

The Boise Soccer Club, continuing its season-long domination of NNC, downed the Crusaders 4-1 in the championship game of the Treasure Valley playoffs Saturday in Boise.

NNC had gained a shot at the title by whipping the College of Idaho 5-0 Friday. It was the team's third consecutive shutout.

The day following, however, Boise beat NNC for the third straight time. Newcomer Phil Powers scored for the Crusaders.

NNC closed the season with a 7-3 record.



Huling Finishes X-Country Career

Curt Ankeny of George Fox College successfully defended his NAIA District 2 cross-country title and Oregon College of Education upset the form charts to take the team championship and a berth in the NAIA finals this week. NNC, meanwhile, finished a respectable fifth, one spot higher than one year ago.

Ankeny ploughed his way through the heavy rain and ensuing mud to record an easy 22-second winning margin with a 26:11.8 clocking over the 5.0-mile Pier Park course, far off his 25:28.8 course record, set last year.

OCE surprised with their well-balanced victory, piling three runners into the first eight for a four-point edge over host Lewis & Clark College of Portland, 59-63. Southern Oregon College had been favored here following a victory over OCE in an earlier meeting, but could only manage third.

NNC senior Dick Huling closed out his collegiate cross-country career with a fine tenth-place finish, although unfortunately missing a berth on the

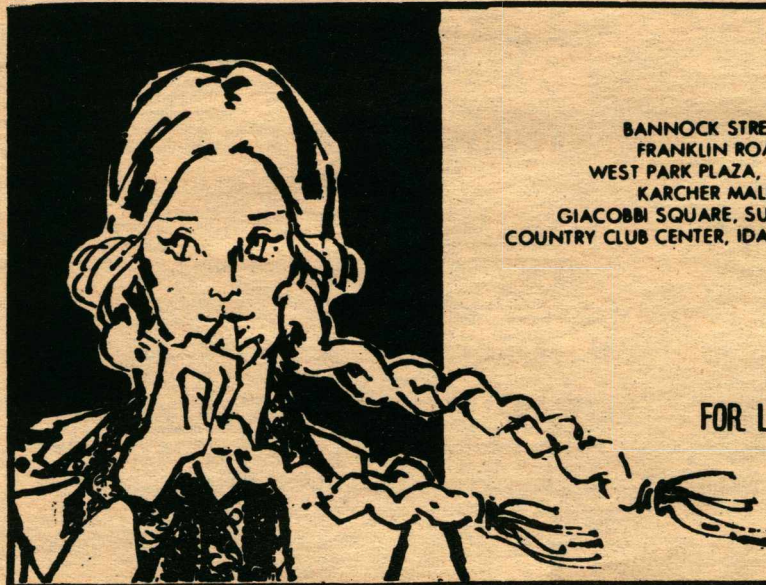
seven-man All-District team. First-year man Steve Hills wasn't far behind in 13th position with Randy Fox coming home 23rd. Rounding out the Crusader effort was Geren Manley in 31st, Sid Sever (45th), Ken Sohriakoff (46th) and Don Scherer (50th).

TEAM SCORES: Oregon College 59; Lewis & Clark 63; Southern Oregon 86; Linfield 87; Northwest Nazarene 122; Willamette 164; Eastern Oregon 167; George Fox 171.

INDIVIDUAL PLACERS: Curt Ankeny (GF) 26:11.8; 2. Ken Woodward (LC) 26:34; 3. Rickhard Kirkham (Wil) 26:36; 4. Bob Ray (Lin) 26:42; 5. Dave Castle (OCE) 26:45; 6. Chris Fatland (OCE) 26:48; 7. Larry Miller (SOC) 27:09; 8. Dave Barker (OCE) 27:21; 9. Peter Brown (LC) 27:30; 10. Dick Huling (NNC) 27:33... 13. Steve Hills (NNC) 27:53... 23. Randy Fox (NNC) 28:32;... 31. Geren Manley (NNC) 28:58... 45. Sid Sever (NNC) 30:58... 46. Ken Sohriakoff (NNC) 30:58... 50. Don Scherer (NNC) 31:49.



Vote
Today



BANNOCK STREET, BOISE
 FRANKLIN ROAD, BOISE
 WEST PARK PLAZA, ONTARIO
 KARCHER MALL, NAMPA
 GACOBBI SQUARE, SUN VALLEY
 COUNTRY CLUB CENTER, IDAHO FALLS



Carroll's

FOR LOOKS THAT SCORE HIGH ON COLLEGE APTITUDE TESTS!

ASNNC Budget: Voting Today

Balance from 1972-73
Prepaid assets
Fees collected
Total amount to be budgeted

\$ 916.52
539.05
32,976.00
\$34,431.57

Budget Criteria Listed

President:

Retreats \$ 400.00
Conferences 1,180.00
Dues 160.00
Miscellaneous office 1,500.00

1972-73
\$ 485.00
1,400.00
165.00
1,300.00

Salaries
President \$775.00
Executive V.P. 625.00
Social V.P. 625.00
V.P. for Comm. Rel. 625.00
Secretary 625.00
Business Manager 625.00

\$750.00
600.00
600.00
600.00
600.00
600.00

Reserve for refund 1,000.00
Capital goods 1,560.00
Issues and Answers 1,200.00
Temporary reserve 00.00
Reserve for contingencies 00.00
Projected carry-over 500.00
Departmental reserve 100.00

3,750.00
1,000.00
00.00
1,200.00
250.00
1,000.00
575.00
00.00

TOTAL

\$11,500.00

\$11,125.17

Executive Vice President:

Cheerleaders 400.00
Classes
Freshman 80.00
Sophomore 80.00
Junior 200.00
Senior 200.00
Religious life 100.00
CWB 125.00
Forensics 205.00
Reserved for:
Forensics 205.00
Model U.N. 350.00
AWS 250.00
Karate 00.00

400.00
100.00
80.00
700.00
200.00
25.00
25.00
750.00
00.00
00.00
75.00
00.00

TOTAL

\$2,195.00

\$2,355.00

Vice President for Social Affairs:

All School Functions
Student-Faculty Reception \$ 100.00
Freshman 100.00
Halloween Party 175.00
Christmas Party 170.00
Sweetheart Banquet 220.00
All-School Picnic 440.00
films and misc. 150.00

1972-73
\$ 200.00
60.00
*
*
275.00
*
*

TOTAL

\$ 960.00

\$1,435.00

AWS

Homecoming Banquets 125.00
Twirp Nights 50.00
Homecoming 415.00
Junior-Senior Social 600.00
Reserve for concerts and contingencies 2,601.57
Departmental reserve 100.00

175.00
00.00
350.00
00.00
00.00
00.00

TOTAL

\$4,851.57

\$1,960.00

Vice Pres. for Comm. Rel.:

Recruitment 600.00
Operation Satisfaction 200.00
Public Relations 75.00
Employment 25.00
AWS
Prospective Student Day 25.00
Departmental Reserve 50.00

975.00
25.00
00.00
00.00
00.00
00.00

TOTAL

\$975.00

\$1,000.00

Other Organizations:

Oasis 10,600.00
Crusader 4,310.00
KERH 00.00

10,800.00
3,563.00
2,360.00

TOTAL

\$14,910.00

\$16,723.00

GRAND TOTAL

\$34,431.57

\$33,163.17

I. Criteria for funding

A. Student government operations shall receive first priority. These expenditures shall include retreats, conferences, dues, miscellaneous office, salaries, reserve for refund, and projected carryover.

B. Student services-Recruitment, public relations, activities are considered very important aspects of student government and shall accordingly receive significant funding.

C. Student publications-The Oasis and Crusader shall be funded at a level that is considered appropriate for them to operate successfully and effectively.

D. Student organizations-In general, restrictive organizations shall not be funded by the ASNNC. It is generally agreed that these organizations merit funding, but the proper source of funds, administration or student government, has not yet been satisfactorily determined. The external rather than internal operations of organizations shall be funded. Organizations that are funded shall provide a service to a significant number of students directly and or a significant public relations benefit.

Organizations which are representative of NNC in competitive situations-such as Model United Nations, and Forensics, shall be funded this year, but future budgeting of these organizations is under study.

AWS, although it does qualify as a restrictive organization, shall be funded by the ASNNC because it is open to a significant proportion of the student body. If a similar man's organization were existant, it would also be eligible for funding.

* All School functions and programs were budgeted for a total of \$900.00 in 1972-73.