

# ADPs WIN FACULTY LOVING CUP

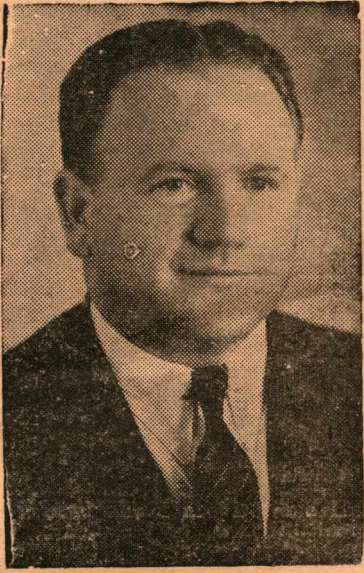
## Eighth Annual Mangum Lectures Begin Monday With Rev. Elmer Schmelzenbach

Rev. Elmer Schmelzenbach, one of our Nazarene missionaries from Africa, will deliver the Mangum Missionary lectures from February 8 to 12 during the chapel hour.

The Schmelzenbachs plan to live in Nampa during their furlough. Their children, Harmon Lee and Joyce, will attend the college and high school, respectively, during the second semester of 1953-54.

The 1954 Lectures will be the eighth annual series. Previous lectures have been: 1947, Mrs. Louise Robinson Chapman (Africa); 1948, Rev. C. H. Winan (Peru); 1949, Rev. P. L. Beals (India); 1950, Dr. Lauren Seaman (Africa); 1951, Rev. and Mrs. Ralph Cook (India); 1952, Rev. and Mrs. Earl Mosteller (Cape Verde Islands); and 1953, Evelyn Witthoff (India).

Students are encouraged to ask Rev. Schmelzenbach any questions they may have concerning missionary problems. He will be available for conferences.



REV. E. SCHMELZENBACH

## Heart Sister Week Will Be Feb. 10-13

Heart Sister Week will be officially opened Feb. 10, when the associated women students will draw names for their "heart sister."

This drawing will take place during the Wednesday chapel period, according to Doris Holmes, AWS president.

Following the chapel period, each girl will perform a good deed or do a favor for her "sister" each day.

To climax this affair, a party has been scheduled for Saturday night in Morrison parlor.

Heading committee groups are Berdina Oldenkamp, program; Connie Mitchell, decorations and advertising, and Betty Bradford, refreshments.

## A Glance With Les At World Events

By Les Chambers

At 8:45 in the morning on January 23, 1954, 14,209 Chinese prisoners became free civilians of Nationalist China. These former prored soldiers marched out of their prison camps waving red, white and blue Nationalist banners, the Stars and Shripes, and the pale blue and white of the United Nations.

They were greeted with the blare of bands and cheers of the thronging South Koreans. A loud speaker boomed out greetings of welcome as the P. W.'s neared the edge of freedom. The P. W.'s called back "Hsieh, Hsieh!" (Thanks, thanks) as they moved into the UN zone.

### Red Doomsday Proclaimed

At their landing on Formosa, Premier Chen Cheng of Nationalist China proclaimed "the advent of doomsday" for Communist China's rulers.

At Seoul the 7,574 P. W.'s who were also released on January 23, were more reserved than their Chinese comrades. They peered, silent and blinking, from boxcars as the crowds gave them apples, cakes, caramels and tea. In his tribute to them, President Syngman Rhee declared the P. W.'s had dealt the Communists "the most rescinding ideological defeat in their history."

Back in Korea's bleak neutral zone, 21 Americans, one Briton and 325 South Koreans who refused repatriation carried Red "peace dove" banners as they marched from their barbed wire compound.

They sang, cheered and shouted charges of imperialism and germ warfare at the Western world as they boarded big green trucks for the trip north.

### Americans Explain

The prisoners, in individual and group interviews, said they want to be "peace fighters" and cannot do so in the United States.

## 561 Enroll For Second Semester

Registration of 37 new and returned students for second semester brought the total enrollment at NNC to 561, as of February 1.

College High, including the Junior High students, totals 168.

Registration of the new students represents class standings as follows: Graduates, 1; seniors, 72; juniors, 62; sophomores, 98; freshmen, 123; Bible Certificate, 3; and special, 22.

New students are: seniors, Jack Johns; juniors, Maxine Charlson, Billie Tuttle, Verne Belzer, Gust Moline, Carlyle Dean, Carol Newgard and Orlea Seely.

Sophomores, Opal Fischer, Paul Miller, Joan Eaton, Glee Barnett, Patricia Somerville, JoAnn Cook, Don Zachery, Albert Lundy, Alice Oldenkamp, Melva Moline, Tom Nyhus, Margaret Nafziger, Wanda Robertson and Martha Knox; freshmen, JoAnn Wilcox, Jerry Averil, William Lawrence, James Cavert, Robert Hollinger, Frank Ellis, Dick Basset, Betty Ann Davis, Raymond Flater, Nada Stanley, Harmon Schmelzenbach, Chester Thomas, Paul Lancaster and Duane Peppley, and graduate, Ivalee Bolerjack.

## "The Enemy" Is Judged As Best Play; Second Place LSPs Take Participation

Securing a grand total of 3,159½ points, the members of the Alpha Delta Phi society captured the first semester faculty loving cup, edging past their nearest rivals, the LSPs, by a 458½ point margin. Russ Miller was president of the winning society.

The Olys placed third with 2,504 points, 197 less than the second place LSPs, and 131½ more than the SLAs.

### "The Enemy" Wins

Directed by Gladys Fred, ADP, and Clarice Harmon, SLA, "The Enemy," took first in the play contest program by a narrow margin.

## Medical Schools Recommend May Admission Tests

Princeton, N. J.—Candidates for admission to medical school in the fall of 1955 are advised to take the Medical College Admission Test in May, it was announced today by Educational Testing Service, which prepares and administers the test for the Association of American Medical Colleges. These tests, required of applicants by almost every medical college throughout the country, will be given twice during the current calendar year. Candidates taking the May test, however, will be able to furnish scores to institutions in early fall, when many medical colleges begin the selection of their next entering class.

Candidates may take the MCAT on May 8, 1954, or on November 1, 1954, at administrations to be held at more than 300 local centers in all parts of the country. The Association of American Medical Colleges recommends that candidates for admission to classes starting in the fall of 1955 take the May test.

The MCAT consists of tests of general scholastic ability, a test on understanding of modern society, and an achievement test in science. According to ETS, no special preparation other than a review of science subjects is necessary. All questions are of the objective type.

Application forms and a Bulletin of Information, which gives details of registration and administration, as well as sample questions, are available from pre-medical advisers or directly from Educational Testing Service, Box 592, Princeton, N. J. Completed applications must reach the ETS office by April 24 and October 18, respectively, for the May 8 and November 1 administrations.

First place titles in girls' volleyball, tennis and golf and boys' softball and the overall winner in the speech contest were instrumental in the ADP win. In athletics alone they rolled up 1,515 points. The LSPs were second with 1,263; Olys third with 1,234 and SLAs fourth with 1,091½.

### First Place Winners

In addition to the winners previously mentioned, other first place titles were won by the LSPs in girls softball and basketball and boys' horseshoe, plus the winning of Closed Night and the Jamboree. This gave them a total of 2,701 points.

The Olys received second in the speech contest and firsts in boys' football, basketball and tennis, giving them a total of 2,504.

Strengthened by the 1,000 points from the play, the SLAs tallied 2,821½. They tied with the Olys for the football championship crown.

The most participation points were turned in by the LSPs, 201, while the ADPs had 197; Olys 154 and SLAs 125.

## Plans Are Underway For Jr.-Sr. Banquet

The junior class, under the direction of Harold Stickney, is going forward with plans for the annual Junior-Senior banquet.

Committees at work are as follows: decoration—Carol Newgard, Jan Atkinson, Howard Arnold and Sue Wentworth; invitations and programs—Ardis Manley, Louisa Starkey, Noreen DeJong; location and menu — Len Back, Lillian George, Dr. Hansen; theme and program—Howard Smith, Wayne Aller, Della Mae Reed, Norm Crofford; gifts—Paul Anderson, Phil Peterson and Miss Carlson.

May 7 has been selected as the date for the banquet.

## Profit of Joint Nazarene Enterprise Is Proved in Fourth Annual Youth Revival

The fourth annual "Youth Week Revival" held last week in College Church has proved again the great profit of this joint enterprise of the five Nampa Churches of the Nazarene. Large crowds were present each night with attendance reaching the 1,000 mark on Wednesday night. On Friday night a poll of those present revealed splendid delegations from each of the five churches. The NNC student body again faithfully supported the campaign and demonstrated its keen interest in this distinctly youth-centered week.

### Sermons Geared to Youth

Rev. Ponder Gilliland and Paul Skiles make up a team that has few if any peers in the field of youth evangelism. As General President of the Nazarene Young People's Society, Rev. Gilliland has a real grasp of young people's problems. His preaching was strictly Scriptural and yet geared itself to the pertinent needs of Nazarene youth. His two chapel messages given on Thursday and Friday mornings found a ready response in the hearts of the students. Several mentioned that the talk on the place of faith in securing a religious experience was the most helpful they had ever heard. The good response to the invitations in the meeting

represents only an earnest of the value of the evangelist's ministry.

### Skiles Is Extraordinary

Paul Skiles, trombonist extraordinary, captivated everyone with his winsome personality and dedicated talent. Night after night the Holy Spirit touched hearts in the congregation as he played the Gospel in song. New choruses taught—an enthusiastic choir each night—Saturday night's scintillating sing-spiration in Morrison parlor . . . all this and more we owe to this consecrated young man with the horn!

Machinery has already been set in motion for next year's Youth Week with Paul Martin and Ron Lush as the evangelists.

## School Purchases Car For Summer Traveling Groups

L. Wesley Johnson, NNC business manager, left this week for Detroit, Mich., to secure a new car which will be used for traveling groups during the summer, according to President Riley.

Enroute home he will visit the district preacher's meeting in Minnesota and will solicit funds for the "Catch-up Campaign" in that state and in North Dakota.

## Twelve Students Boast Perfect GPA; Fifty-One Maintain 3.4 Or Better

Twelve NNC students displayed a perfect grade point average of 4.00 at the closing of the first semester, while 51 maintained a G. P. A. of 3.4 or above, according to final averages released by the Registrar's office. Following is a list of the honor students by classes:

In the senior class Carlton Bryson, Glen Embree and Jim Lais maintained a perfect average. Thomas Leckie, Ross Carroll, Jr., Charles Seller, Betty Lou Miralles, Bonnie McGraw, Dick Ivester, Roger Weber, Virginia Hennis, Joe Keen, Kenneth Bortles, Harold Hughes, Ron Beech, Ardith McCann, Sam Scammon, Bertie Graham, Mary Jo Osterhout, Ivan Lathrop, Mary McKenzie, Paul

Wright and Rod Newman made a 3.4 average or better.

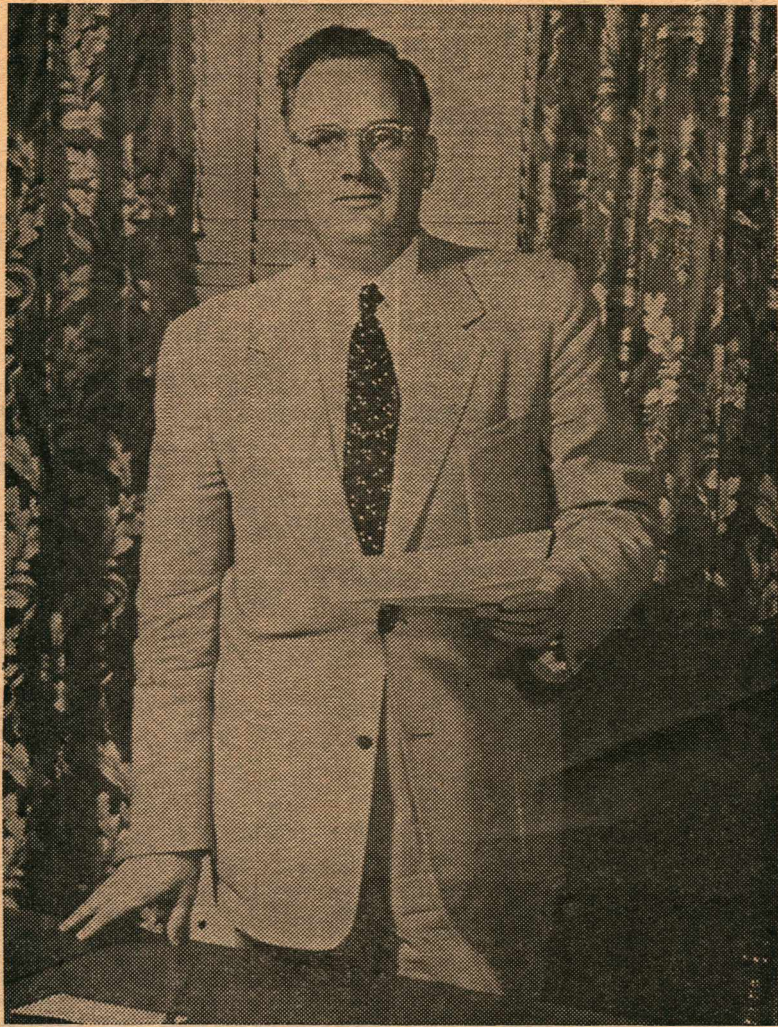
Juniors with perfect marks were Jim Gilson, Margaret Hyslop, Art Manchester, Lyndol Pullen and Louisa Starkey. Margaret McClung, Raymond Cooke, Dera Lee Mitchell, Omar Barnhouse, Philip Peterson, Virginia Smalldridge, Sue Wentworth, Edna Thrush, Glen Tombaugh, Wayne Aller made a 3.4 or better.

Sophomores who snared straight "A's" were Joe Stockett and Maurice Weigelt. Mickey Dean, Berdina Oldenkamp, Earl Emerson, Carol Hankins, Elsa Lou Slack, Margaret Crowe, Gladys Fred, Phyllis Hartley and Marvin Brunson maintained averages above the 3.4 level.

(Continued on page four)



# An Adventure in Christian Living



DR. JOHN E. RILEY

I am happy for this opportunity to welcome you new students to the campus of Northwest Nazarene College, "An Adventure in Christian Living."

There are some of you who, I am sure, will have to alter your concept of NNC after you have been here for a while. Just a few days ago a young man told me of his disillusionment when he discovered that NNC is not a nine months' Young People's Institute. I hope he moves from that blue mood of disillusionment to a sounder, lifelong appreciation of NNC.

### College Is An Influence

I look back now to that day when I walked onto the campus of another Nazarene college as the beginning of one of the top influences in my life. I suppose I would rate my personal salvation, my parental home, my church, and my wife and family as the top influences in my life. But at a certain period in my life all of these and many other factors were all bound up together and influenced by my Alma Mater. There on that little green campus I became settled religiously, mentally, and socially; all of my heritage was fixed in my thinking; I was called to give my life to the ministry; I fell in love with the young lady who five years later was to become my wife; all the best of my previous life was there crystallized; the guiding principles of my later life were adopted—that's what ENC meant to me. I devoutly pray that NNC may mean just that to all her students.

### Components Are Many

There are many components in this "Adventure in Christian Living"—routine dormitory, dining room, and campus life, where "getting along with others" on a genuine, wholesome Christian basis is one of the biggest lessons ever to be learned (college life is a real leveling experience); managing on limited financial means; intellectual labor to meet the demands of professors sometimes hard to satisfy; keeping first things first in a crowded schedule; finding religious certainties in thought and prayer, private and public worship; setting standards of ethical living; striving to achieve personal balance in the midst of apparently contradictory forces. It is hard, sweaty business—getting an education—and, if it were not, it would not be worth having.

Who said it was heaven around here? It is not! But it is a spiritual adventure! And if you really make it here you will be quite likely to make it successfully later on.

## NNC Crusader

Published bi-weekly during the school year by the students of Northwest Nazarene College, Nampa, Idaho, reflecting their views and opinions, not necessarily those of Northwest Nazarene College. Members of Associated Collegiate Press and Rocky Mountain Intercollegiate Press

- Editor-in-Chief ..... Noreen DeJong
- Business Manager ..... Max Urwin
- Assistant Editor ..... Miriam Faul
- Assistant Business Manager ..... Leon Doane
- Advertising Manager ..... Emmett Hutchins
- Sports Editor ..... Howard Smith
- News Editor ..... Betty Bradford
- Makeup Editor ..... Betty Dalen
- Rewrite ..... Betty Russell
- Feature Editor ..... Geri Leih
- Circulation Manager ..... Russell Miller
- Assistant Circulation Manager ..... Colleen Wooten
- Proofreader ..... Art Manchester
- Girls' Sports ..... Lois Tracy
- Boys' Sports ..... Lloyd Bellamy
- Reporters ..... Betty Brown, Betty Coffman, Betty Gatherer, Ginny Poplin, Mary Lou Oldenkamp, Ginger Phillips, Eleanor Horne, Les Chambers, Clarice Harmon.
- Typists ..... Sam Scammon, Norma Dell Smith, Joy Tink, Della Mae Reed and Marjorie Clay.
- Advisor ..... Olive Briggs

## from the... LIBRARIANS' DESK

If you can't find your way around the library in the beginning of this second semester, don't fear that you are losing your mind or necessarily growing old or absent-minded.

Every book in the library, except on the north side of the east reading room, .016.D56 to 220.6, has been moved.

All reference works are now in the reading room, beginning with Reader's Guide in the southwest corner, and ending with History of North Idaho in the northeast corner.

IRC books occupy the shelves of the east end of the west reading room. The Curriculum Library will occupy the opposite side.

The .220.54-252 R11 are in the east reading room, replacing reference works, and occupying the new shelves along the south wall. The 252s are continued in the stack room. All books from that classification through the 900s are also in the stack room.

If you make yourself a little sketch of present locations and do a little exploring, you'll soon be able to find your way around once more.

## Dear Phil...

I have been reading your column regularly and I feel the advice you give to other broken hearts is the type I need.

Valentine Day is approaching and I haven't a he-male to which to send a card. I did buy a new box of the greetings and used all but one on relatives. What do you suggest I do with that extra?

I sign off waiting your worthy reply.

Love,  
Sally Mae.

Dear Sally:

I'm glad to hear that you are old enough to read my column, and get a bang out of it.

As I see it, you are a victim of hydrafobia. I would advise you to wash your socks more often, brush your teeth twice as often as you usually do, brush your hair every night and send the Valentine to your teacher; teachers always appreciate little things.

But above all, forget yourself. As my friend Anonymous once said,

## KALBUS Office Supply



Filling tube reaches out to drink the ink!

The only pen that ends "dunk filling"

as low as \$7.50

Point never needs wiping! Famous Sheaffer writing quality. See it, test it. Buy now for school!

KALBUS OFFICE SUPPLY  
121 13th Ave. So.



Dr. Alvin Aller, left, shows Dave Bauerle the operation of the new microtome which was donated to the Biology department by a former student, Lt. Frank Ellis. In the background is the snake collection recently given the department by Mr. and Mrs. Geller.

## Gellers Donate Snake Collection To NNC

Three years ago this summer Herbie Geller went home to California with four "live" snakes. Each snake had been placed in a flour sack and were put together in a box, taped, and marked with: "Danger! Snakes!"

Herbie took special care of these and placed them in a zipper bag, as he traveled on the bus to his home. On arriving he built a cage for them and gave them the proper feeding.

After a few months at home, Herbie decided to "put up" the snakes. With his mother's help and the usual equipment and procedure he preserved these.

Last week Mr. and Mrs. Geller gave these specimens to the Biology department. The collection is two rattlesnakes and one bull snake.

"The smallest of all packages is a person all wrapped up in himself."

Sincerely,  
Phil Osopher.

## Shelton & Diggs BARBER SHOP

WE CATER

to

COLLEGE STUDENTS

12th Ave. between Main & 2nd

## Biology Department Receives Microtome

A new instrument has been donated to NNC Biology department by a former student, according to Dr. Alvin Aller.

The former student, Lt. Frank Ellis, is now serving as a dentist in the navy and has already donated his personal compound microscope valued at \$200.

The microtome, valued at \$400, is a precision instrument. Its purpose is that of cutting of tissues in preparation of slides for microscopic study. It will cut down to the thickness of one micron (1/1000th of a millimeter).

The department plans to offer a course in micro-technique in which the instrument will be used.

## SCHMITT'S Shoe Repair

Shoe Repairing  
Shining  
Dyeing

Leather Jacket Repairs  
(Lining and Zippers)

Phone 6-7212

## KAMPUS KORNER GROCERY

Always a Friend to N. N. C.

Your Campus Grocery, School Supplies and Variety Store

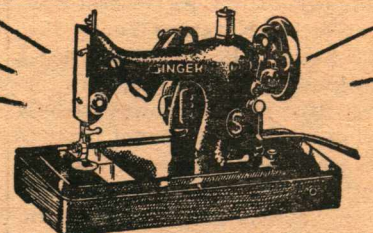
Corner of Holly and Dewey

## Own A SINGER Sewing Machine

Do your clothes need altering? . . . making drapes? We will deliver an electric sewing machine to your home. Just phone us — or stop in today.

Only \$69.50  
6.50 down, only 5.98 mo.

1212 First St. South  
Phone 6-6589



SINGER Sewing Machine



## NNC Trounces EOCE, 94-81, in Annual Tip-Off Game; Lois Tracy Named Queen

Lois Tracy, a senior from La-Grande, Ore., was presented the bouquet of red roses, thereby revealing the selection of the 1954 queen at the annual Tip-Off game Jan. 23.

Queen Lois I reigned over one of the most exciting ball games seen this year in Central gym—a game which she began by throwing the ball to the officials. The Crusaders handed the highly touted Mountaineers from EOCE a 94-81 defeat.

The Crusaders gained an early start by jumping to 20-1 before the Mountaineers found the range but then it was too late for them to gain contention as the Crusaders were hitting from everywhere on the floor.

Outstanding for the Crusaders was Duane Peppley who literally kept the Crusaders in the game in the closing minutes of the game with his accurate shooting which gained him Crusader high point honors for the evening with a healthy 25 tallies. Mickey Dean added 23 points which, with Myron Finkbeiner's 15, made the record shine for the Crusaders. All of the starting five hit the two-column figures which is good for a well-balanced team.

## Physical Well-Being Is A Must in College

The college years are without a doubt a period of intellectual and social advancement. Unfortunately the physical well-being usually begins to go downhill. This shows a lack of thoughtful planning by the undergraduate. It may also indicate that collegians lack a proper sense of values.

Many students will stay up until all hours of the night to finish a class assignment. Socially, most collegians also lead full lives. But except for the varsity athletes and a few serious and regular entrants in the intramural program, students neglect keeping in shape.

The comment by collegians on this physical neglect is that, "I'm not planning on being All-American, so what use is there in doing a lot of exercise?"

The answer is of course extremely evident. Intelligence and personality, the qualities developed by study and social life, cannot function at their best unless health is also first-rate.



LOIS TRACY

## Basketball Schedule

|   |            |           |
|---|------------|-----------|
| Girls   | Jan. 28    | ADP-SLA   |
|   | Jan. 29    | Oly - LSP |
|   | Feb. 1     | ADP-LSP   |
|   |            | Oly-SLA   |
| Boys  | Feb. 2     | LSP-Oly   |
|   |            | ADP-SLA   |
| Girls   | Feb. 4     | ADP-Oly   |
|   |            | LSP-SLA   |
| Boys  | Feb. 5     | ADP-LSP   |
|   |            | Oly-SLA   |
|   |            | ADP-LSP   |
| Girls   | Feb. 8     | LSP-Oly   |
|   |            | ADP-SLA   |
| Boys  | Feb. 9     | ADP-Oly   |
|   |            | LSP-SLA   |
| Girls   | Feb. 11    | Oly-SLA   |
|   |            | ADP-LSP   |
| Boys  | Feb. 12    | ADP-SLA   |
|   |            | LSP-Oly   |
| Girls   | Feb. 15    | LSP-SLA   |
|   |            | ADP-Oly   |
| Boys  | Feb. 16    | Oly-SLA   |
|   |            | ADP-LSP   |
| Girls   | Feb. 18    | Make-Up   |
| Boys  | Feb. 19    | LSP-SLA   |
|   |            | ADP-Oly   |
| Boys  | Feb. 23    | Make-Up   |
| Mills-Cunningham & Long-Hibbard Wesche Tournament |            |           |
| Preliminaries                                     | Feb. 22-26 |           |
| Finals  | Feb. 27    |           |

## One Way To Skin The Water Fountain

(ACP) — You think you have problems! Consider the case of the decorative water fountain at Southern Methodist university.

It isn't run in the winter—because it might freeze. And it isn't run in the summer—because there's a water shortage in town that time of year.

Last week the SMU student council voted unanimously to try to get the fountain flowing.

How are they going to do it? Easy. Use anti-freeze, and let it bubble all winter.

## SPORTS... SLANTS

By Smitty

The interval between the two semesters has presented a lull in the sports area so there is relatively little to write in this issue but we might be able to dig up a few items of interest to the one or two devout readers who leisurely glance over this choice bit of meaningless writing.

Intramural basketball should be interesting this season with all the stars wearing the colors of their societies. The ADPs seem to have the advantage this time with the addition of big Carlyle Dean, who has enrolled this semester, and Tom Lowry, former players, as well as Merv Gale, Russ Miller, Jim Harris and Wally Johnson. The SLAs will also pick up a little strength when Don Boyd teams up with Wayne Aller and probably Bob Cantonwine who may play society ball.

The dark horse might be the LSPs since, according to rumors, Norm Stueckle, former Colfax, Wash. High flash, will be gracing the floor for the blue and white. In a private interview with "Flash" this afternoon, he said he expected to be in top form by the second or third game due to the fact he's been getting a workout almost every night. Stueckle's going to have to prove himself capable before we take this statement too seriously because of the difference between the natures of the two sports.

We wouldn't want to leave the Olys out of this pre-season prediction since they proved they had the best squad last season. But keep in mind they will be back without the services of Len Back who has been transferred back to the College varsity. They will still be strong contenders despite this loss and will give all three teams a good run for their money.

Might be wise to mention that the directors for the intramural program this semester have been selected and it will be Lois Tracy again for the girls and Darrel Reisch for the boys.

## Crusaders Return From Road Trip; Bow To Tough EOCE Mountaineers

### ADP Girls Upset Defending Champs

Upsetting last semester's champs in girls' basketball, 29-21, the ADPs took the lead over the LSPs with a two wins and no loss record to their credit. The Olys are in fourth place with no wins and two forfeits for this semester.

The SLAs and LSPs have one win and one loss each at press time. Thursday's games, which will place the ADPs against the Olys and the LSPs against the SLAs will break this tie.

The LSPs and ADPs will continue to fight for first place. The two teams were tied for first place last semester, with the final victory going to the LSP girls. Martha Hopkins leads the ADP with 14 and 19 points to her credit in the first two games played this semester.

#### Standings, Feb. 2, 1954

|     | W | L |
|-----|---|---|
| ADP | 2 | 0 |
| LSP | 1 | 1 |
| SLA | 1 | 1 |
| Oly | 0 | 2 |

The last semester has been in a rather bad situation as far as deciding the points each society has and who won what, etc. It would be worth it, we think, for the Athletic Literary Council to decide on more definite rulings and regulations as to the point system. Greater precaution should be taken in adhering to these laws. If those responsible for society activities will get in and help our directors all they can, it will make their job much easier and we're sure they'll appreciate it a lot. They have a tough job to do and the rest of us can help them.

NNC Crusaders completed another basketball trip early this week after playing four games of which they won three. The lone loss came at the hands of EOCE, who two nights before fell at the hands of the NNC squad on the local floor, in one of the best exhibitions seen this year. The Crusaders just could not hit the following Monday at the Oregon school.

The local boys moved on to Goldendale the next evening to defeat a town team and also the Zilla town team two nights later. Both games were relatively easy except for the Goldendale boys who gave the Crusaders some trouble.

The last big game on the trip was against George Fox College who is the leader in their organized league. NNC had little trouble handing them a loss with Peppley peppering the twine for 26 points. Incidentally, Pep has scored 25, 19 and 26 points in the three games he's played in college competition since joining the Crusader camp. This is good in any man's league and has considerably boosted the NNC attack.

The win-loss record now stands at 13 wins and eight losses for Coach Lee's boys with the completion of this trip.

LONGINE - WITNAUER WATCHES

Bullock Jewelry

ON MAIN ST.

Diamond Engagement Rings

1217 1st St. S. Ph. 6-6201

## NAMPA TROY LAUNDRY, INC. DRY CLEANING

"Let A Single Call Do It All"



FLAT WORK

PHONE 6-2486

## Dairy King



- Hamburger ..... 20c
- Chili Burger ... 25c
- Pickle Burger 25c
- Cheese Burger 25c
- Sloppy Gus Burger ..... 35c



Also

- The Mongrel
- The Krauthound
- The Bar-B-Q-Pup
- The Mutt-Caliente



ORANGE JULIUS 10c



FOUNTAIN ICE CREAM SUNDAES MALTS

524 - 3rd St. So.

Nampa's Leading Cleaners

The French Cleaners



Free Mending Two-Day Service



Our Campus Representative KAMPUS KORNER GROCERY

DIAL 6-4676

133 Caldwell Blvd.

HEY FELLOWS!! See Jack McEvoy

Room 241

Chapman Hall

for your

CAMPUS WEAR

Campus Representative for



Dads 'n Lads

Fellow Seniors:

Many of us are going to need a new SUIT for GRADUATION this spring. Why not pick out the SUIT of your choice now and put it on our LAY-AWAY plan and make it EASY on your pocketbook. Pay a little whenever you can and when graduation comes—it's all PAID FOR!! Come to room or look me up on the campus. I'll be glad to help you.

Sincerely yours, JACK McEVOY, N. N. C.



### New Students



Pictured above are 16 of the 37 new students enrolled second semester. Total registration figure for the semester is 561.

### Nampa High Trio Provides Music At Circle K Luncheon

A trio from Nampa High School, consisting of Marilyn Samp, Barbara Tiegs and LaDonna Nafziger, provided special music at the Circle K luncheon Wednesday noon.

Guests were members of the local Kiwanis. Faculty guest was Dr. Gilbert C. Ford.

At the previous luncheon Dr. Alvin Aller showed colored slides of topographical interest.

### Alpha Phi Lambda Members Hear Panel

Dr. Carl Hansen, Prof. Francis Reeves and Rev. Elwood Sanner took part in a panel discussion at the Monday evening meeting of the Alpha Phi Lambda.

The discussion centered around problems of philosophy and theology.

The group voted to donate \$5.00 toward the "Catch-Up Campaign."

### It Was Easy, Dad—I Didn't Study

(From the Daily Reveille, "My son, now that you are home from college, tell me of all the wonderful things you have learned. I want to hear all about it, because I never had a chance to get a college education.")

"What is this, my son? You learned nothing? How can that be? You were there four years. You must have learned something."

"Well, I'll tell you how it was, dad. When I did make it to classes, I slept. I never bought a textbook, much less read one. In fact, I never read anything that had anything to do with college or courses. I never talked to anybody about anything; I just had a good time."

"But, son, you've got a degree. How did you manage?"

"It was easy, dad. I had a system. You see, I only scheduled courses giving objective tests."

"But, son, you've got to know something to put the letters and numbers in the right place."

"No, dad, if you schedule the right courses, know how to make plus and minus marks, how to put a number or letter in a blank, and

### Final Oasis Deadline Will Be Met March 1

Work on the 1953-54 Oasis is progressing rapidly, according to Bonnie McGraw, editor.

Three quarters of the book has been completed and the remaining one-fourth will be turned in on the March 1st deadline.

Some pictures are still being taken such as orchestra, society officers and sport shots. The student body will receive the finished product sometime during the last two weeks of school.

### Twelve Students—

(Continued from page 1)

Top freshmen were Edwin Arnold and Mary Lou Oldenkamp with 4.00 averages. Lois Kelly, Betty Ann Dalen, Patricia Nine, Helen Franklin, Merritt McKay, Jean Figg, Velma Poole, Betty Walker, Marian Anderson, Willie Smith, Betty Russell and Lloyd Bellamy were above 3.4.

if you're really lucky, you can get a college degree."

"Then the degree doesn't mean much, does it, son "

"No, sir, I guess it doesn't."

**DRUGS - TOILETRIES**  
**FOUNTAIN PENS**  
**PENCILS**  
**MAGAZINES**  
**CANDIES**  
**BABY SUPPLIES**  
**ECONOMY DRUGS**  
 Frank Cromwell  
 124 12th Ave. S. Tel. 6-9922

**Coffee Cup CAFE**  
 Complete Line of  
**Dinners, Lunches, Short Orders**  
 ● Home Cooking  
 ● Reasonable Rates  
 ● Christian Courtesy  
 Next to Tommy's  
 Arnie Rogers Prop.

**NAMPA DRUG**  
 Wonderful Selection of CARDS  
 ★ Humorous  
 ★ Serious  
 ★ Valentine

★  
**CHOCOLATES**  
 for your Sweetheart  
 1, 2, 3, 4 and 5-pound boxes  
 ★  
 1219 2nd St. South  
 PHONE 6-7311

### KROK Will Present "Romeo and Juliet" Tomorrow Morning

Shakespeare's "Romeo and Juliet" will be presented over KROK tomorrow morning at nine o'clock according to Marvin Emrich, station manager. This is an "Old Vice Company" presentation. This production is recorded in RCA Red Seal "orthophonic" microgroove records.

New students and others interested in working with the KROK staff are urged to contact the station manager or his assistant.

Marvin Emrich and Assistant Manager Marvin Brunson are making plans to attend the seventh annual Western Radio and TV Conference in San Francisco, on February 18-20. This is a conference of educators, students, and commercial broadcasters. The conference sessions are to be held at San Francisco State College.

**Slim's BARBER SHOP**  
 for the best haircut in town!  
 NAMPA, IDAHO

For That  
**VALENTINE GIFT**  
 give a  
**Plastic Heart**  
 The most lovely plastics in the Boise Valley  
 Made by GLEN SEALS  
 Reasonable, Too!  
**ART CENTER**

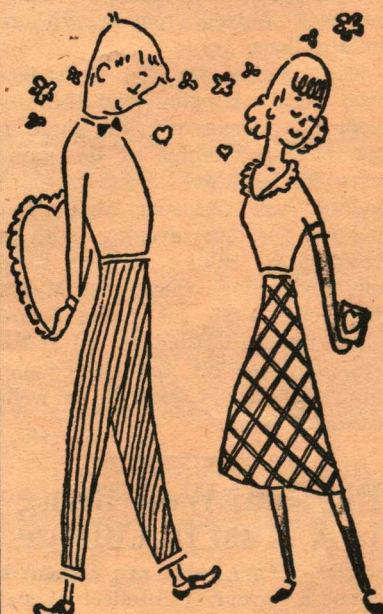
**THOMPSON'S RICHFIELD**  
 S & H GREEN STAMPS  
 See Us FIRST for ANYTHING on your car.  
**Complete Auto Service**

Dry Cleaning - Pressing - Repairs Alterations  
 DIAL 6-6331  
 FREE PICKUP AND DELIVERY  
**MACY CLEANERS & TAILORS**  
 Men's and Women's Made-to-Measure Clothes  
 16 Wall Street Nampa, Idaho

**Girls!**  
 Permanents, Hair Styling  
 are our specialty  
  
**VARNEY'S BEAUTY SALON**  
 1319 3rd Street South Phone 6-0911


### Shaw's "Candida" Is Discussed At Scriblerus Meet

An informative analysis of George Bernard Shaw's "Candida" was presented by Lyndol Pullen at the Jan. 22 meeting of the Scriblerus Club. The affair was held at the home of Pat Davis.

**sweethearts**  
 are sweet on  
**HALLMARK VALENTINES**  
  
 Because they're bright and beautiful... with words that say what you want to say, just the way you want to say it. Be first for yours at  
**HAZZYS**  
**Book & Stationery**  
 Remember—Hazy Haz 'Em

**THE CEDAR CHEST**  
 — Home of the —  
**DELICIOUS BARBECUE SANDWICH PLATE**  
 Open from 11 a. m to 7 p. m. 13th Ave. So., near Front St.

FOR A  
 Super Hair Cut and a Friendly Chat  
 GO TO THE  
**Palace Barber Shop**

**CHOO CHOO INN**  
 WE SERVE  
 Snacks and Complete Dinners  
 —Toward Boise on Hiway 30—  


★ Corsages  
 ★ Bouquets  
 ★ Centerpieces  
  
**We Wire Flowers**  
 No lovelier way to remember than by giving flowers.  
 ★  
**NAMPA FLORAL**  
 1207 2nd Street South Phone 6-3508